



**HOTEL ASTORIA**  
ST PETERSBURG  
A ROCCO FORTE HOTEL

Perfect for stylish banquets and meetings, Hotel Astoria has an enviable position in the centre of St Petersburg, the visually stunning 'Venice of the North'. Here you will find two beautiful historic banqueting halls, five well-equipped meeting rooms plus four meeting rooms and a Conference Hall in the neighbouring Angletterre Hotel. With spectacular views onto St Isaac's Square from its floor-to-ceiling windows, Astoria Restaurant is the place to be seen, and offers delicious Russian and French cuisine.

---

**Meetings & events facilities**

- historic Winter Garden and Ballroom, available for car exhibitions to gala dinners for up to 350 guests
- 5 meeting rooms for up to 70 guests
- Business Centre
- 4 additional meeting rooms plus an auditorium for 186 guests in adjacent Angletterre Hotel

---

**Accommodation**

- 83 bedrooms
- 86 suites, including the 234-310m<sup>2</sup> Tsar Suite
- an additional 192 rooms in adjacent Angletterre Hotel

---

**Restaurants & bars**

- *Astoria Restaurant*
- *Lichfield Bar*
- *Rotonda Lounge*
- *Borsalino Restaurant* – in Angletterre Hotel

---

**Astoria Spa**

- sauna
- steam room
- gym

---

**La Maison de Beauté Carita Astoria**

- 5 treatment rooms, hair salon
- express beauty services

---

**Transfers**

- 30 min from Pulkovo International Airport (LED)
- a short drive from five main railway stations
- easy access – St Petersburg is just 2.5 hours from Frankfurt and Munich, 3 hours from London and 50 minutes from Helsinki
- nearest Metro: Admiralteyskaya



---

**Hotel Astoria**

St Isaac's Square  
Ul Bolshaya Morskaya 39  
St Petersburg 190000, Russia  
T +7 812 494 5757  
F +7 812 494 5059  
reservations.astoria@roccofortehotels.com  
roccofortehotels.com/hotel-astoria

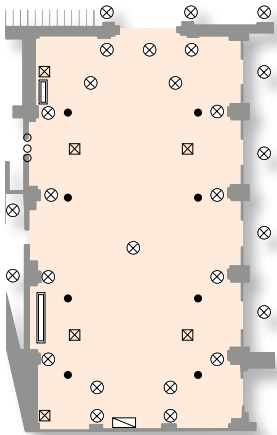
RFHotelAstoria  
 @RF\_HotelAstoria  
 @astoriahotel



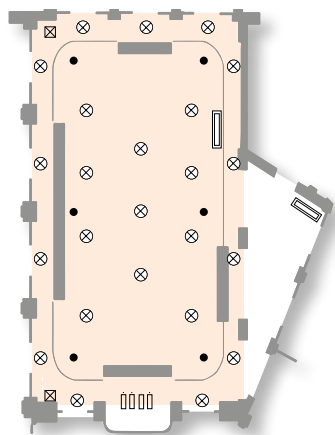
**HOTEL ASTORIA**  
ST PETERSBURG  
A ROCCO FORTE HOTEL

Hotel Astoria	Size	Dimensions L x W x H	Boardroom	Cabaret	Classroom	Dinner	Reception	Theatre	U-Shape	Floor
<b>Winter Garden</b>	170m <sup>2</sup> 1848ft <sup>2</sup>	17 x 10 x 6.6m 56' x 33' x 13'7"-21'6"	50	84	80	150	150	120	40	Ground
<b>Ballroom</b>	260m <sup>2</sup> 2788ft <sup>2</sup>	24.9 x 10.4 x 7.5m 82' x 34' x 24'6"	70	114	150	184	200	220	60	Ground
<b>Repin</b>	27m <sup>2</sup> 91.2ft <sup>2</sup>	3.8 x 7 x 4.3m 12'5" x 22'9" x 14'1"	10	12	16	10	15	18	9	Ground
<b>Shaliapin</b>	16m <sup>2</sup> 52.4ft <sup>2</sup>	3.6 x 5.2 x 4.3m 11'9" x 17' x 14'1"	4	6	8	8	10	12	8	Ground
<b>Turgenev</b>	41m <sup>2</sup> 416ft <sup>2</sup>	5 x 8.2 x 4.3m 27' x 16' x 14'1"	14	18	20	16	20	24	13	Ground
<b>Benois</b>	72m <sup>2</sup> 775ft <sup>2</sup>	4.5 x 16 x 3.02m 15' x 52'5" x 7'9"-10'	22	18	20	32	25	30	22	Second
<b>Lidval 1</b>	58m <sup>2</sup> 624ft <sup>2</sup>	12 x 4.5 x 3.02m 39' x 15' x 7'9"-10'	22	24	24	24	35	40	25	Second
<b>Lidval 2</b>	53m <sup>2</sup> 571ft <sup>2</sup>	10.6 x 4.5 x 3.02m 35' x 15' x 7'9"-10'	20	18	18	24	35	30	21	Second
<b>Lidval 1&amp;2</b>	111m <sup>2</sup> 1195ft <sup>2</sup>	22.6 x 4.5 x 3.02m 74' x 15' x 7'9"-10'	40	36	40	48	70	70	36	Second

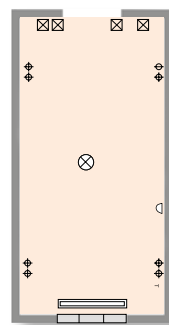
**Ground Floor**



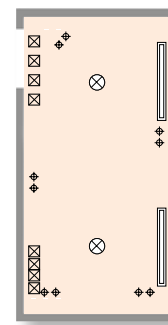
**Ballroom**



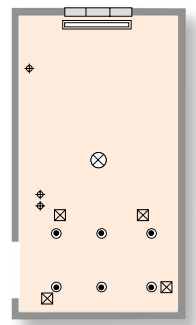
**Winter Garden**



**Shaliapin**

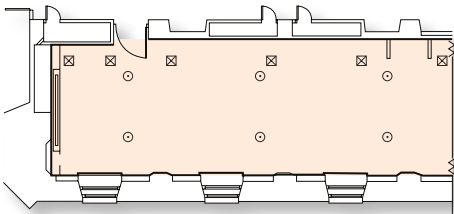


**Turgenev**

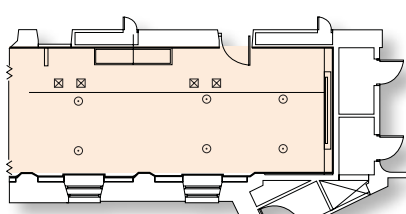


**Repin**

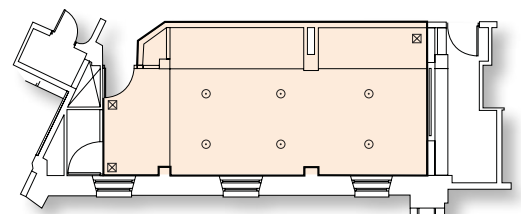
**Second Floor**



**Lidval 1**



**Lidval 2**



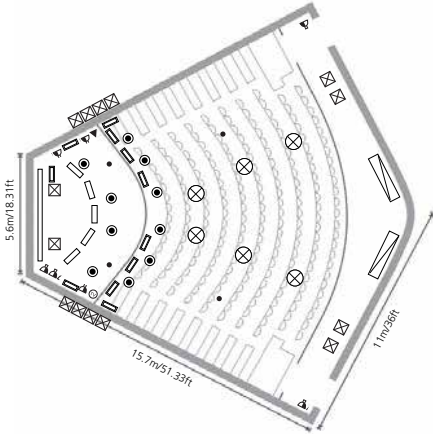
**Benois**



**HOTEL ASTORIA**  
ST PETERSBURG  
A ROCCO FORTE HOTEL

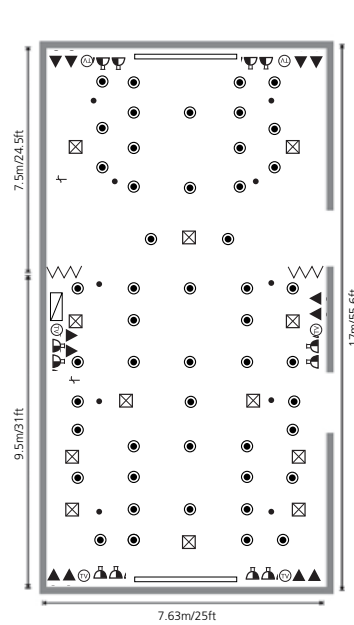
Angleterre Hotel	Size	Dimensions L x W x H	Boardroom	Cabaret	Classroom	Dinner	Reception	Theatre	U-Shape	Floor
<b>Bulgakov</b>	60m <sup>2</sup> 641.4ft <sup>2</sup>	5 x 12 x 3m 16'35" x 39'24" x 9'8"	20	24	24	32	30	40	18	Fourth
<b>Malevich</b>	43.5m <sup>2</sup> 468.2ft <sup>2</sup>	5 x 8.7 x 3m 16'35" x 28'6" x 9'8"	12	18	16	24	20	20	10	Fifth
<b>Conference Hall</b>	200m <sup>2</sup> 2138ft <sup>2</sup>	10 x 20 x 6m 32'7" x 65'4" x 19'6"	-	-	-	-	-	186	-	Ground
<b>Anna Pavolva</b>	118m <sup>2</sup> 1270ft <sup>2</sup>	7.63 x 17 x 3.4m 56' x 25' x 11'1"	50	48	60	64	80	100	46	Ground
<b>Anna Pavolva 1</b>	46m <sup>2</sup> 495ft <sup>2</sup>	7.63 x 7.5 x 3.4m 25' x 24'5" x 11'1"	20	18	24	24	30	30	16	Ground
<b>Anna Pavolva 2</b>	72m <sup>2</sup> 775ft <sup>2</sup>	7.63 x 9.5 x 3.4m 25' x 31' x 11'1"	20	30	30	40	50	50	20	Ground
<b>Esenin</b>	50m <sup>2</sup> 538ft <sup>2</sup>	7.5 x 8.5 x 3.4m 24'6" x 27'9" x 11'1"	20	24	16	32	20	30	15	Ground

Ground Floor



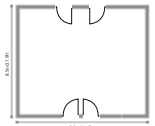
Conference Hall

Ground Floor



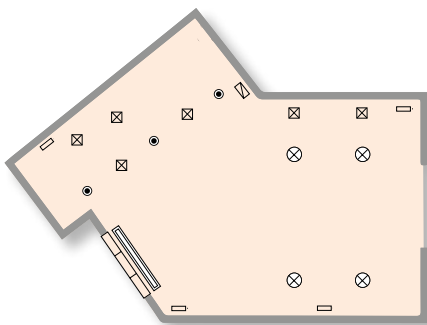
Anna Pavolva

Ground Floor



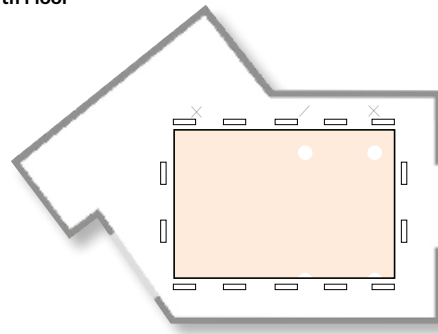
Esenin

Fourth Floor



Bulgakov

Fifth Floor



Malevich